



Wheelers Drive, Ruislip
Ruislip

Guide Price **£485,000**



Wheelers Drive

Ruislip

Beautifully presented 3-bed terraced house with modern kitchen, bright conservatory, spacious lounge, low-maintenance garden, off-road parking for 2 cars, and secure gated rear access. Council Tax band: D

Tenure: Freehold

EPC Energy Efficiency Rating: TBC

EPC Environmental Impact Rating: TBC

- Modern kitchen
- Spacious conservatory with garden access
- Off-road parking for two cars
- Low-maintenance fenced garden with artificial lawn and multiple storage options
- Patio area for outdoor dining
- Downstairs wc
- Peaceful location near local shops and popular schools



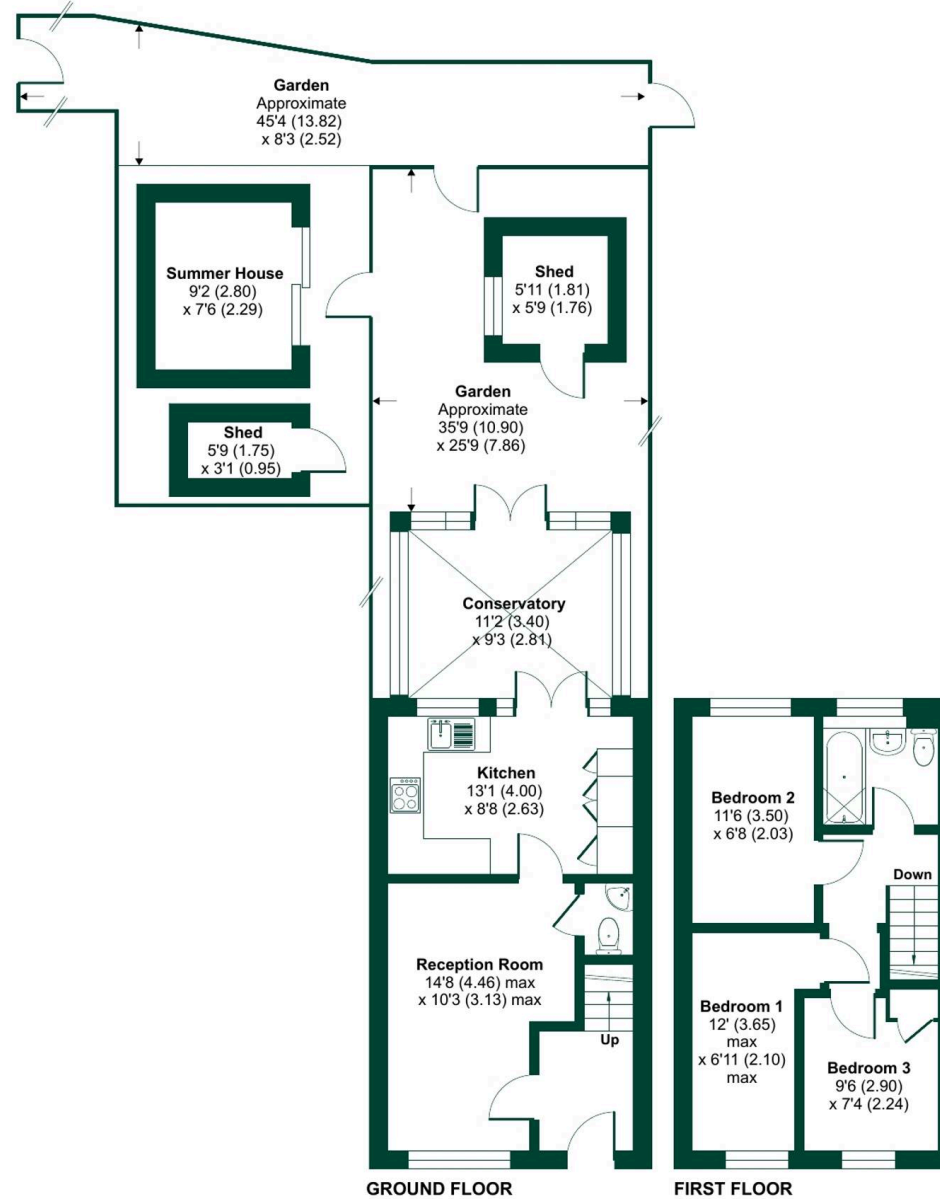
Whealers Drive, Ruislip, HA4 7RG

Approximate Area = 752 sq ft / 69.8 sq m

Outbuildings = 121 sq ft / 11.2 sq m

Total = 873 sq ft / 81 sq m

For identification only - Not to scale





Sam Robbins Estate Agents

1B, High Street, Ruislip - HA4 7AU

01895 217 217

hello@samrobbins.co.uk

<http://www.samrobbins.co.uk>

