



31 Glenalla Road, Ruislip
Ruislip

Guide Price **£1,000,000**



31 Glenalla Road

Ruislip, Ruislip

Impressive four-bed, three-bath detached home with four receptions, modern kitchen, spacious garden, fireplaces, off-road parking, and stylish classic-meets-contemporary design throughout.

Council Tax band: F

Tenure: Freehold

EPC Energy Efficiency Rating: G

EPC Environmental Impact Rating:

- Flexible layout offering any number of living arrangements
- Modern open plan kitchen dining area
- Spacious open plan living areas
- Contemporary bathrooms with freestanding bath and skylights
- Built-in wardrobes and storage solutions
- Ample off-road parking
- Large private garden





Glenalla Road, Ruislip, HA4

Approximate Area = 2210 sq ft / 205.3 sq m

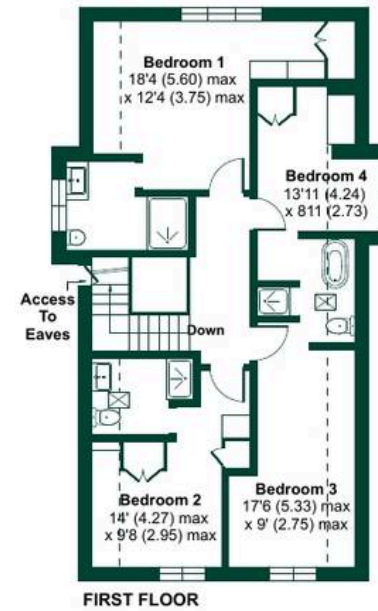
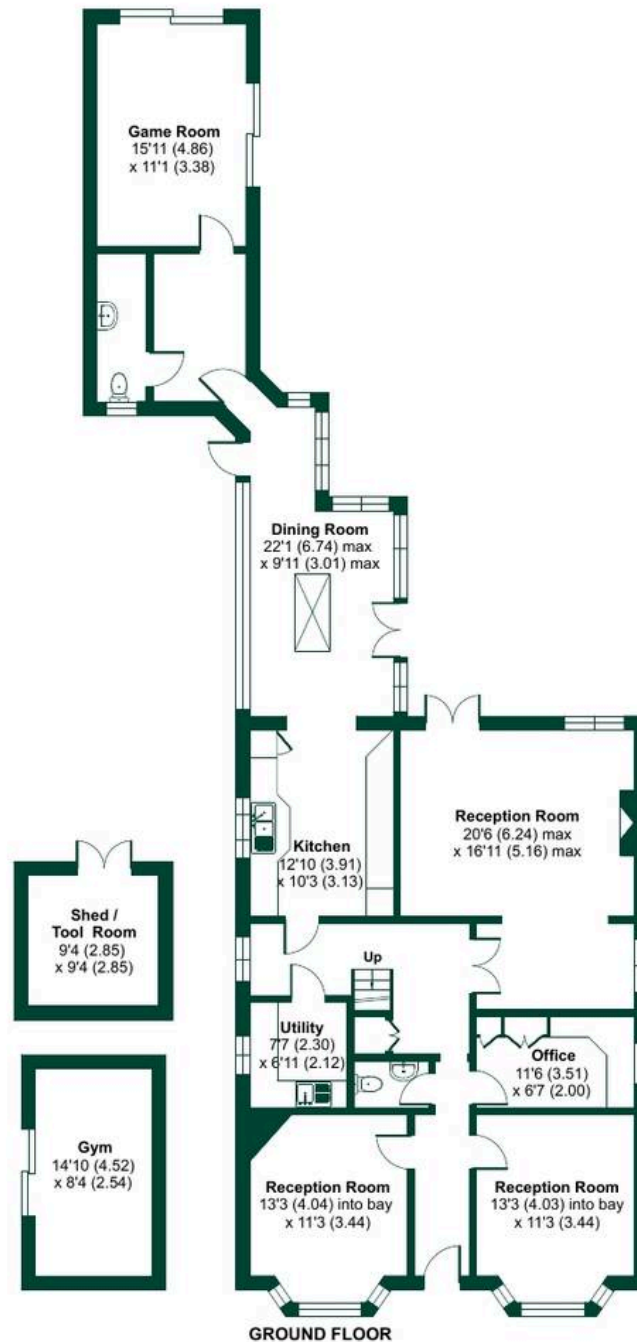
Limited Use Area(s) = 129 sq ft / 11.9 sq m

Outbuilding = 211 sq ft / 19.6 sq m

Total = 2550 sq ft / 236.8 sq m

For identification only - Not to scale

Denotes restricted head height





Sam Robbins Estate Agents

1B, High Street, Ruislip - HA4 7AU

01895 217 217

hello@samrobbins.co.uk

<http://www.samrobbins.co.uk>

