



Broadwood Avenue, Ruislip
Ruislip

Guide Price **£1,350,000**



Broadwood Avenue

Ruislip, Ruislip

Council Tax band: G

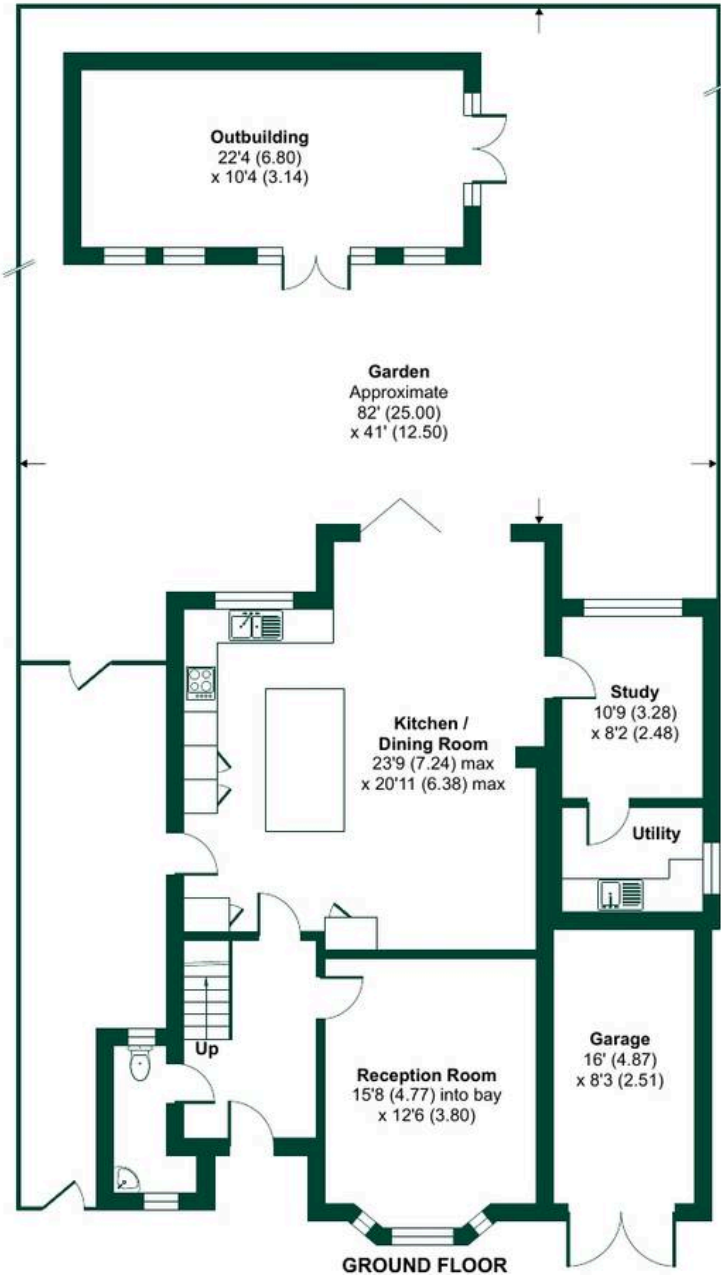
Tenure: Freehold

EPC Energy Efficiency Rating: C

EPC Environmental Impact Rating:

- Located on one of Ruislip's most popular roads
- Spacious open plan kitchen family room
- Modern kitchen with island
- Bi-fold doors out to garden
- Contemporary bathrooms with walk-in shower and freestanding bath
- South facing landscaped garden with large patio
- Scope for further extension, subject to any required consents
- Large outbuilding with air-conditioning
- Carriage driveway for several cars
- Garage
- EV Charger





Broadwood Avenue, Ruislip, HA4

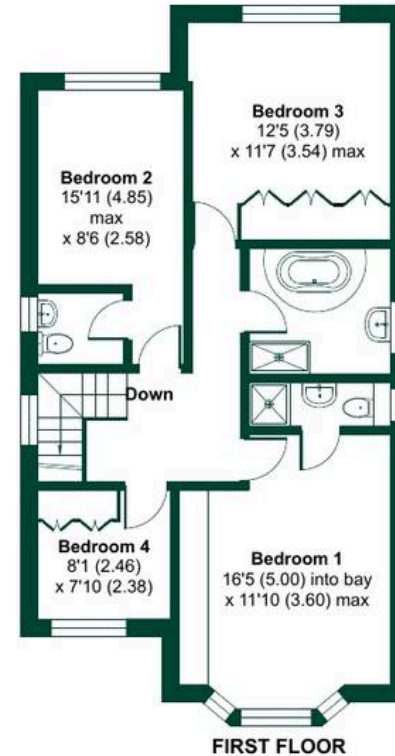
Approximate Area = 1672 sq ft / 155.3 sq m

Garage = 132 sq ft / 12.2 sq m

Outbuilding = 230 sq ft / 21.3 sq m

Total = 2034 sq ft / 188.8 sq m

For identification only - Not to scale



Floor plan produced in accordance with RICS Property Measurement 2nd Edition, Incorporating International Property Measurement Standards (IPMS2 Residential). © nitchecom 2026. Produced for Sam Robbins Estate Agents Ltd. REF: 1442031

SAM ROBBINS
ESTATE AGENTS



Sam Robbins Estate Agents

1B, High Street, Ruislip - HA4 7AU

01895 217 217

hello@samrobbins.co.uk

<http://www.samrobbins.co.uk>

